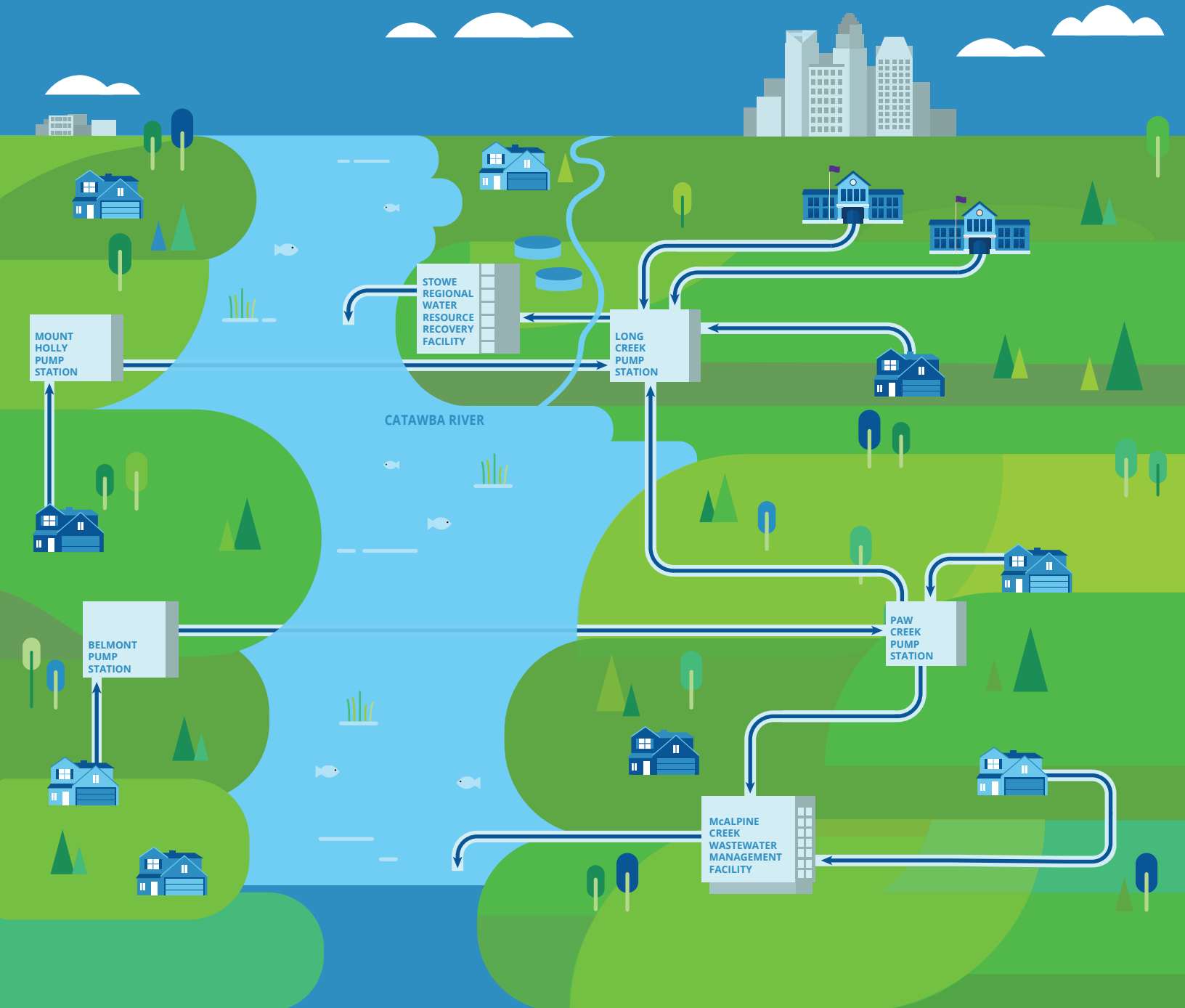


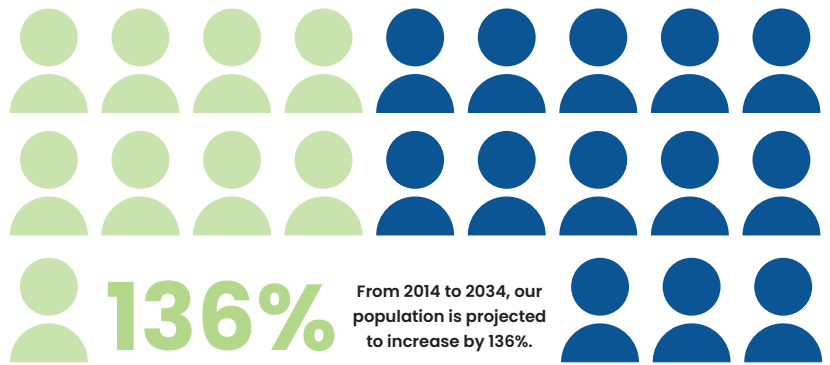
WHERE DOES WATER GO?



The Benefits

Meeting Future Wastewater Needs

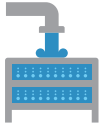
Our region is growing very quickly. As more people and businesses move here, they will make more wastewater that needs to be treated. The new Stowe Regional Water Resource Recovery Facility will treat wastewater from west Mecklenburg County, Mount Holly and Belmont. With this added capacity, we will be able to manage our future wastewater treatment needs.



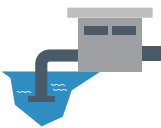
Enhancing Environmental Practices



Improve water quality in this area of the Catawba River. Advanced technology will more effectively process and purify wastewater to meet heightened water quality standards.



Save energy by reducing the distance wastewater must be pumped for treatment.



Reduce impacts to the Catawba River shoreline and wetlands. Treated water will be discharged into the river in only one location instead of the two current locations.



Preserve land for future generations to enjoy nature. The 90-acre property around the facility will be used for the Community Benefit Project.

Consolidating Wastewater Facilities

We will replace existing treatment plants, one in Mount Holly and one in Belmont, with pump stations. Wastewater from these cities will be treated at the new Stowe Facility. Planning studies found that this regional collaboration will be:

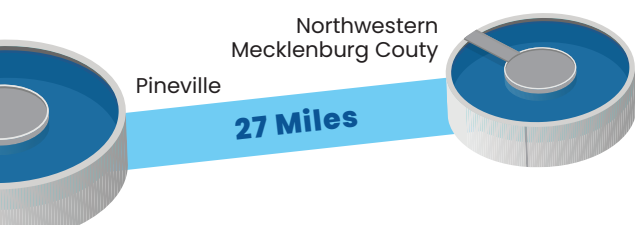
cheaper • more efficient • environmentally friendly



Minimizing Wastewater Pumping

Currently, wastewater from the North Lake Mall is pumped all the way to Pineville for treatment. Pumping wastewater 20+ miles for treatment uses a lot of energy.

When you treat wastewater closer to where it is made, it saves energy and reduces the risk of a spill.



Investing In Our Community

Charlotte Water is planning a Community Benefit Project on the land around the new Stowe Regional Water Resource Recovery Facility. **This project will be an enriching outdoor amenity for the community.** We want to create a space that encourages well-being and connection.



Community Benefit Project

Before construction began, we got feedback from the community about what they want and need in this area. Then an architecture firm designed different options. The final Community Benefit Project includes:



Educational Walking Trail for hikers and bikes will include interactive educational pieces.



Multi-Use Path for walking and biking along a new road and bridge over Long Creek.



Public Meeting Space for meetings, workshops, and events. The meeting room will be in the new Stowe Administration Building.



Collaborative Partnership with the Catawba Lands Conservancy. We will work together to plan future trails and trail connections.



STEM Education Program with nearby schools. We work with local teachers to help students learn about the environment, science, technology, engineering and math.

stoweregionalwrrf.com

